



**Sel Environmental**  
Real Innovation.



# SEL Environmental - Background

- Established in 1999.
- Current turnover in the order of £4,000,000
- Over 30 employees
- 6 strategic divisions
- National and International coverage
- 40,000 sq. ft. premises based in Blackburn
- Highly skilled fabrication workshop
- Very experience installation teams





# SEL Environmental - Our Service

Our all-encompassing service includes:

- Design Assistance and Value Engineering
- Project Management
- Experienced Contracting
- Precision Fabrication and Unique Product Ranges
- Research and Development





# SEL Environmental - Sectors

A diverse yet focussed company, operating in multiple sectors:

- Commercial Integrated Water Management
- Residential Source Control
- Sports Facilities
- Green Infrastructure
- Building Protection Systems
- Gas Migration





# Commercial Integrated Water Management

- Value engineering
- Experienced contracting and project management
- Shallow attenuation/soakaway
- Membrane and Geotextile procurement and installation.
- At source hydrocarbon treatment
- Flow control
- Excel with challenging projects
- Monitoring and control telemetry







# Commercial Integrated Water Management

*Longstanton Park & Ride*





# Residential Source Control

- Source control
- Effective permeable paving
- Attenuation/soakaway
- Managing surface water within the boundaries of individual properties
- Simplified design for enhanced efficiency
- Standardised products
- Flow control



# Residential Source Control







# Retrofit SuDS Systems

Retrofit SuDS can:-

- Help solve localised flooding issues
- Address water quality problems
- Green-up urban areas
- Attract new / Support ecosystems
- Improve the living environment

SEL promote low disruption solutions & technologies



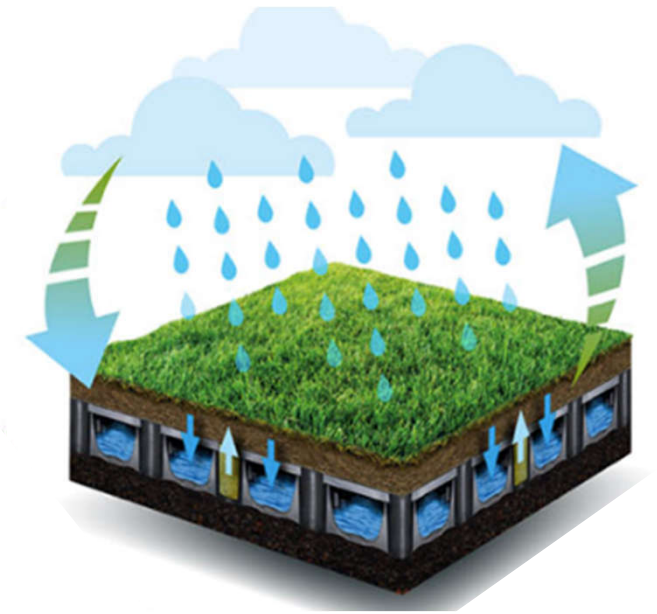
# Retrofit SuDS Systems





# Sports Facilities

- Turnkey Solutions
- Unique lightweight construction – ideal for rooftops
- Systems developed through in house R&D
- Specialist contracting and project management
- Impressive portfolio of high profile projects
- Can be incorporated as part of a sustainable drainage system







# Rooftop Sports Facilities

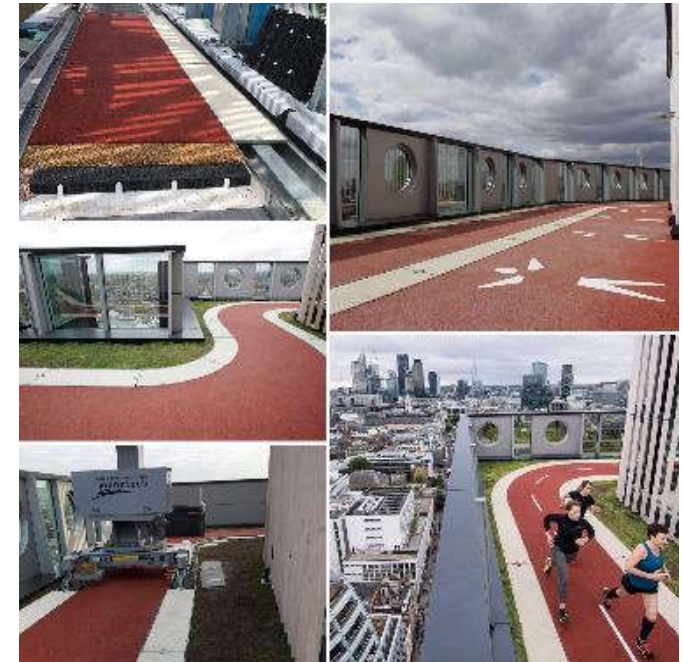
*Battersea Rooftop MUGA (artificial)*



*Putney Rooftop MUGA (resin bound gravel)*



*London's First Rooftop Running Track*





# Ground Level Sports Facilities

*Anfield, Liverpool*



*New White Hart Lane, Tottenham*



*Temporary Hockey Event, Twickenham*





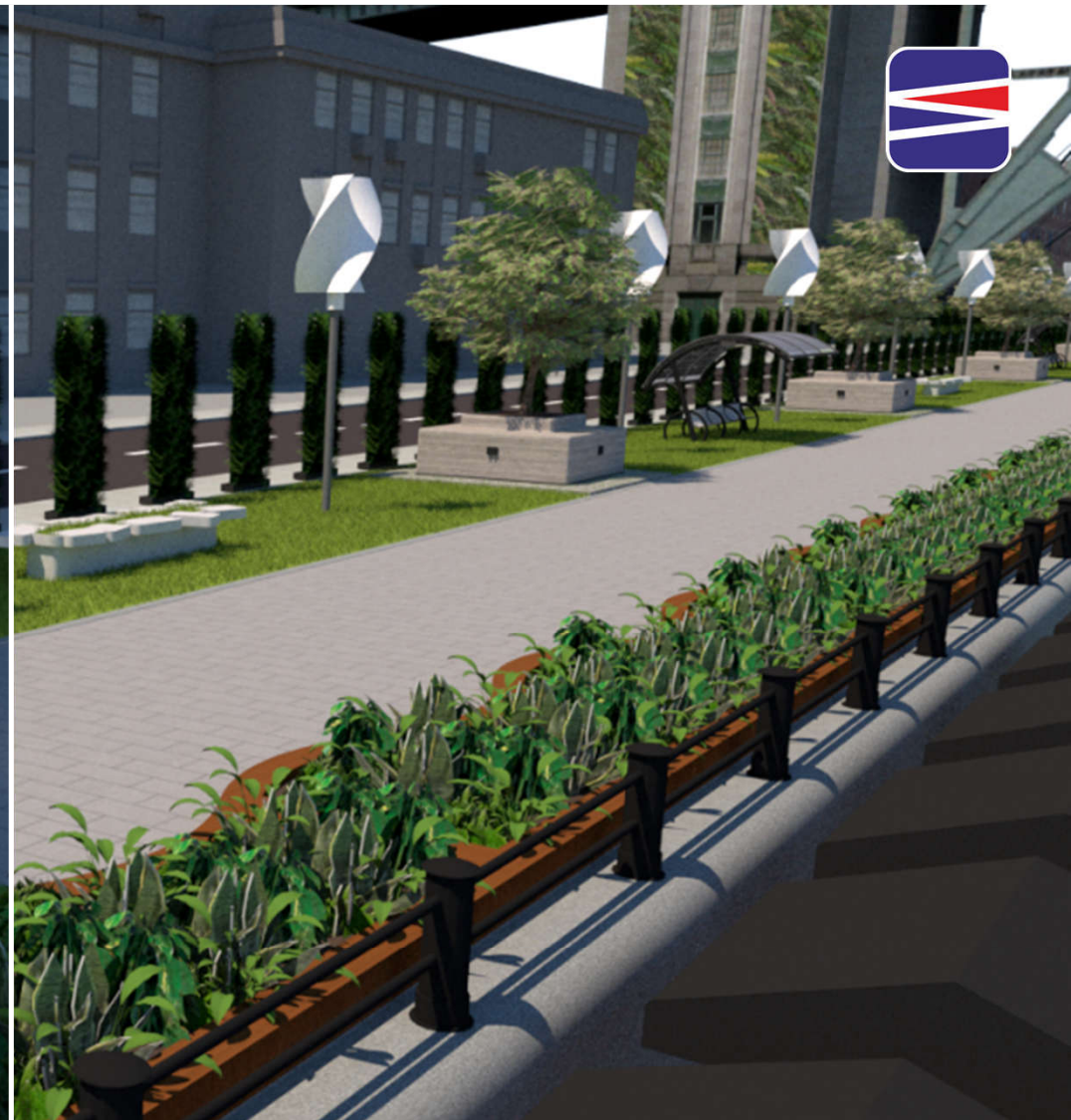


# Green Infrastructure

- Passive irrigation
- Unique product range developed through in house R&D
- Living Roofs
- Soil moisture monitoring and control
- Linear and Modular
- Temporary or Permanent overlay solutions



# Green Infrastructure





# Building Protection Systems

- Site Investigations
- Damp proof/waterproofing to structures
- Gas protection (hazardous gasses)
- Installations in accordance with BS EN ISO 9001
- National installation coverage with multiple installation teams





# Building Protection Systems





# Lateral Gas Migration

- Pathway Interception/preferential pathway
- Virtual Curtain
- No-dig solutions
- Minimal disturbance of contaminated land
- No dewatering
- Rapid installation





# Lateral Gas Migration





# What SEL Can Give You?

- Competitive Edge
- Design Assistance
- Value Engineering
- Project Management
- Experienced Contracting
- Quality Assurance
- Precision Fabrication
- Research & Development
- Peace of Mind