

Prefabricated Membrane Liners - for Attenuation



Off Site Build Technologies

 **Sel Environmental**
Real Innovation.

Technical

Prefabricated Membrane Liners - For Attenuation



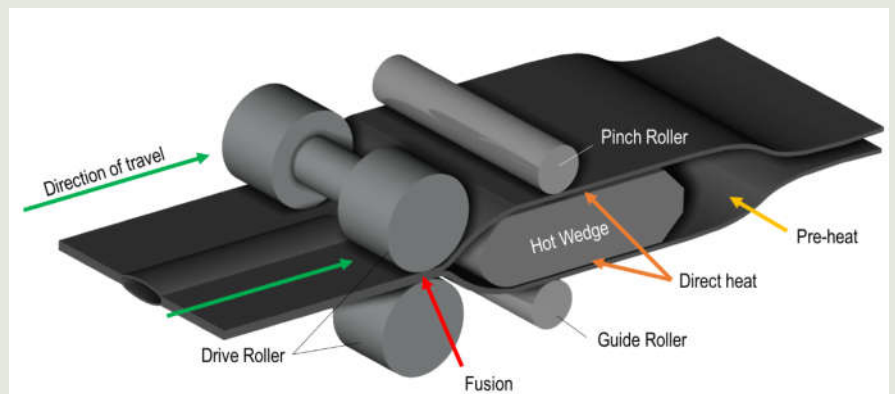
Attenuation is a surface water drainage technique which is promoted by many UK planning departments as an integral component within a sustainable drainage system (SuDS). Currently, most UK planning departments limit the discharge to sewer for new housing developments to ease the burden on existing aged sewer networks. The incorporation of robust attenuation strategy can assist developers in meeting these targets.



Offering both 'source control' (where rainwater run-off is managed as close to where it falls as possible) and treatment (cleansing of collected run-off), attenuation can also help to meet planning conditions relating to surface water drainage systems. They can be used to temporarily store runoff water at source before controlled release.

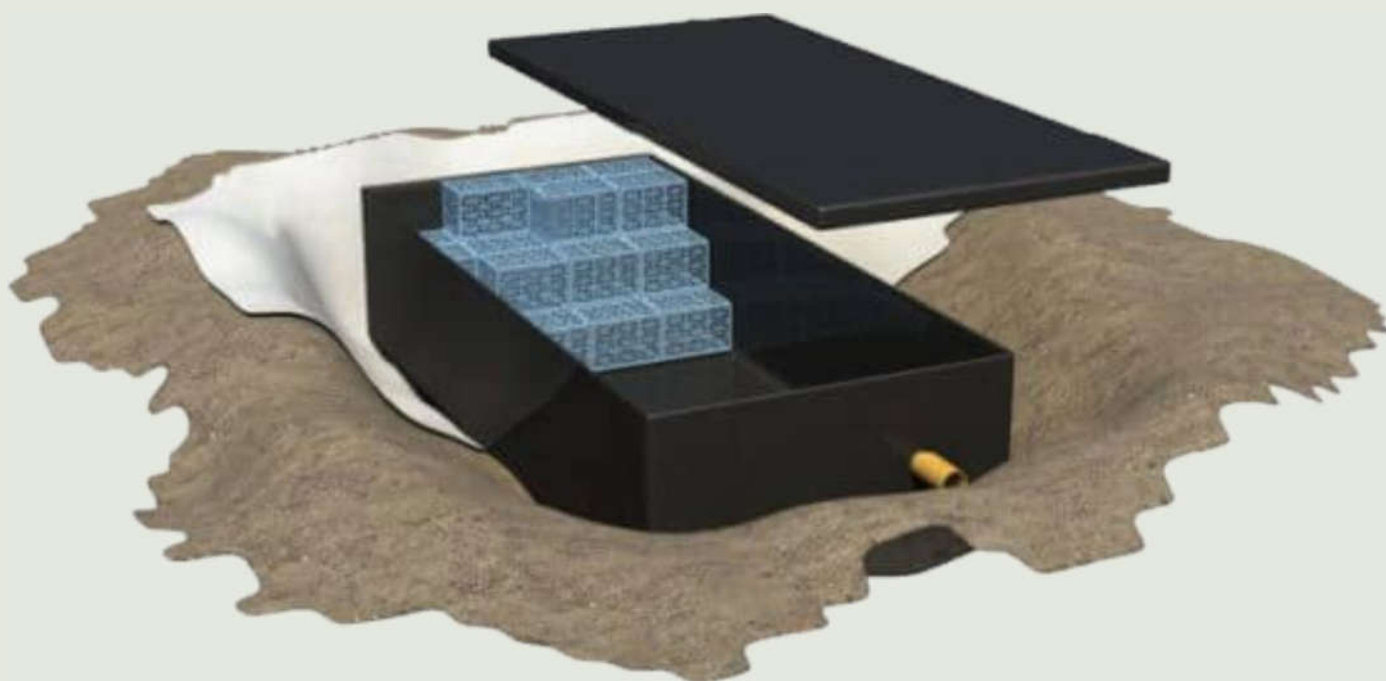
SEL can supply prefabricated, flexible, welded attenuation tank liners and lids; often referred to as "Shoe Box" Liners. These can be manufactured in a variety of membrane types, with pipe connections to suit all pipe diameters. The liners are formed with heat sealed joints and supplied with a lid that should be sealed in position once the attenuation crates are installed inside. Jointing tape can be supplied to secure the lid in position. The liners can be delivered directly to your site for convenience.

SEL has developed the SEL Source AT range of products to simplify the design and enhance the efficiency of attenuation. These products can standardise construction depths, offer enhanced hydrocarbon treatment and optimise the attenuation potential of individual catchments. They allow shallow and deep installation to enable Engineers to overcome site specific issues in the ground.



SEL recommend the use of welded membranes and that all joints are sealed using hot air welding methods. This should be carried out as part of an on-site CQA system where joint integrity is also tested. The jointing should be carried out by an experienced and fully trained membrane installer.

To ensure the integrity of the impermeable membrane a protection geotextile should be used on the outer surface of the liner to provide protection from following trades during backfilling.



Prefabricated attenuation tank encapsulation often referred to as 'Shoe Box' liners are ideal for smaller attenuation tanks allowing self-installation removing the need for a specialist subcontractor. Guidance can be provided on the installation.

The liners can be manufactured in a variety of membrane types such as PP or LLDPE and sized to suit your project specific requirements. Pipe connections can be also be supplied, and are available in a range of diameters.

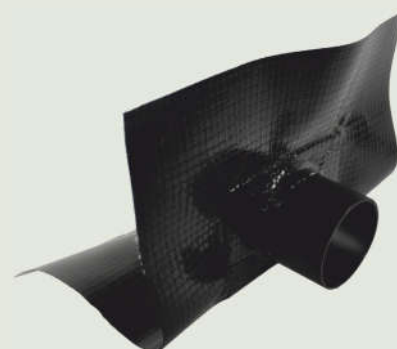
The prefabricated liners are compatible with all attenuation crates systems currently available.

Benefits:

- Economical
- Contractor self-installation reduces cost
- No specialist installation subcontractor
- Avoids programming delays and mobilisation costs
- Provided with welded seams
- Built to any size
- Palletised for delivery
- Fully QA certified
- Free guidance on self-installation offered
- Quick turnaround for delivery



Prefabricated liner ready for dispatch



Watertight pipe connection



Canal House, Bonsall Street, Blackburn, BB2 4DD
T: 01254 589987 E: info@selenvironmental.com W: www.selel.co.uk