

The **SEL**Sports division



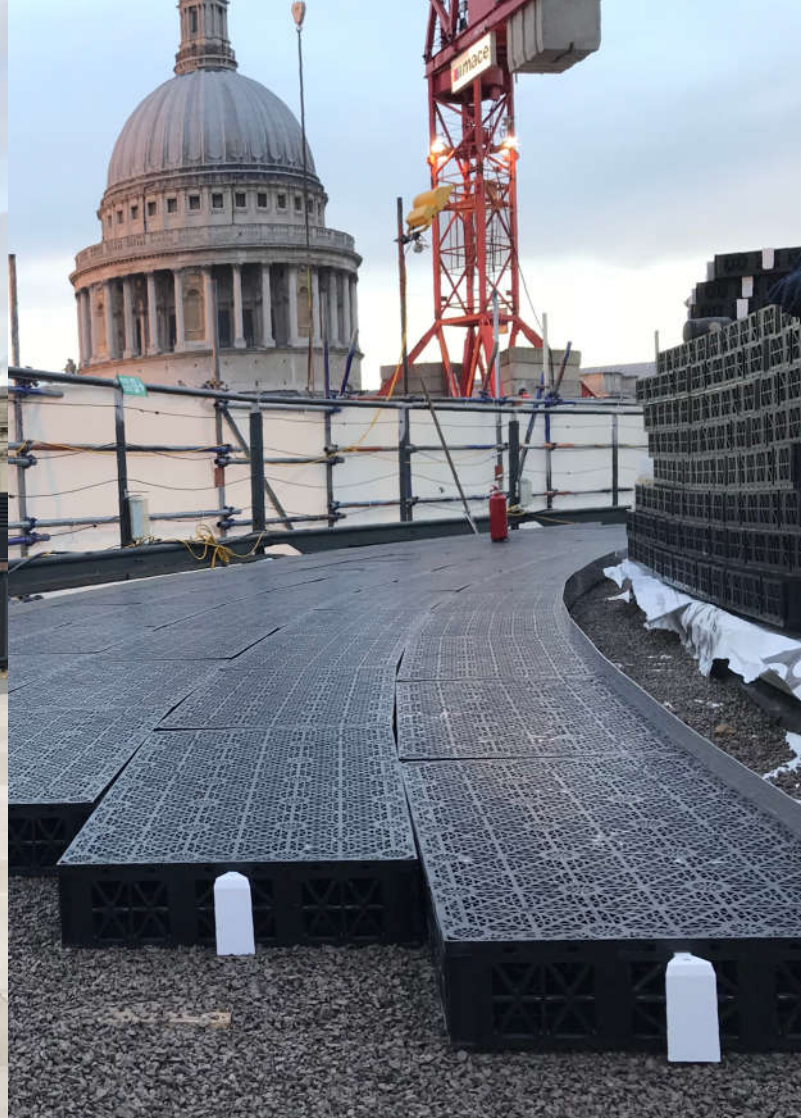
**Sel Environmental**  
Real Innovation.

case studies.

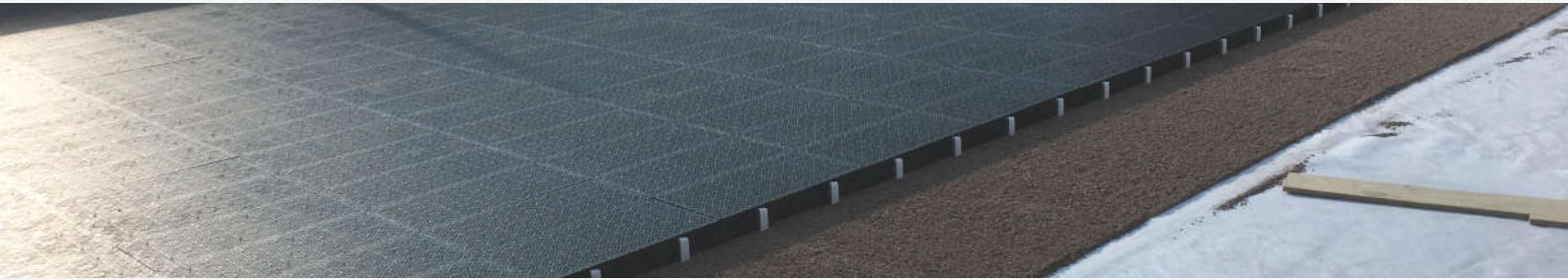
## Bracken House Rooftop Running Track, Central London



A two lane rooftop running track in the shadow of St Paul's Cathedral, offering breathtaking views of the London skyline.



## Stephen Perse Foundation Rooftop Multi-Use Games Area, Cambridge



Cambridge's first rooftop multi-use games area. A sand dressed synthetic turf rooftop MUGA, complete with netball and 5-a-side football line markings.





## Boroughmuir High School Rooftop Pitch, Edinburgh



A 3G synthetic grass rooftop sports pitch, complete with edge details and rubber tiled areas, designed and installed by SELSports.



## Battersea Park High School, London



A sand dressed synthetic grass rooftop MUGA, including fencing and roof netting.





## Putney Common High School, London



A Resin Bound Gravel playground on a rooftop. SELSports were appointed to install a hard-surfaced MUGA and two terraced areas on a rooftop in Putney, circa 1500m<sup>2</sup> total.





## White Collar Factory Rooftop Running Track, Old Street, London



Londons highest running track. A two lane polymeric EPDM running track around the perimeter of the 16th floor of the White Collar Factory in London.





## White Collar Factory Rooftop Amenity Area, Old Street, London



A synthetic grassed amenity area on the 17th floor. One of the building's unique features was an outdoor rooftop communal area on the top floor, 17 storeys up, with breathtaking views of the London skyline.





# Temporary ProLeague Hockey Event, Harlequins Twickenham Stoop



The first temporary venue to host the  
FIH Pro League double header finals.  
The Largest hockey attendance in the  
UK since the 2012 Olympics.





## New White Hart Lane, Tottenham Hotspur FC, London



SELSports installed the high performance drainage system utilised in Tottenham Hotspurs world first retractable Premier League football pitch.





## Anfield Under Pitch Drainage System, Liverpool FC



SELSports installed a specialist water drainage and air blanket system underneath Liverpool Football Club's new Premier League pitch.





## Villa Park Main Stadium Pitch, Synthetic Grass Surround



A seamless synthetic grass pitch surround, providing a hard wearing yet stunning area to facilitate both football and rugby functions.





## London's First 'Smart Street', Bird Street, London



SELSports designed and installed an innovative drainage system and synthetic grass surface as part of the New West End Company's scheme to transform Bird Street in London into the world's first sustainable 'smart street'





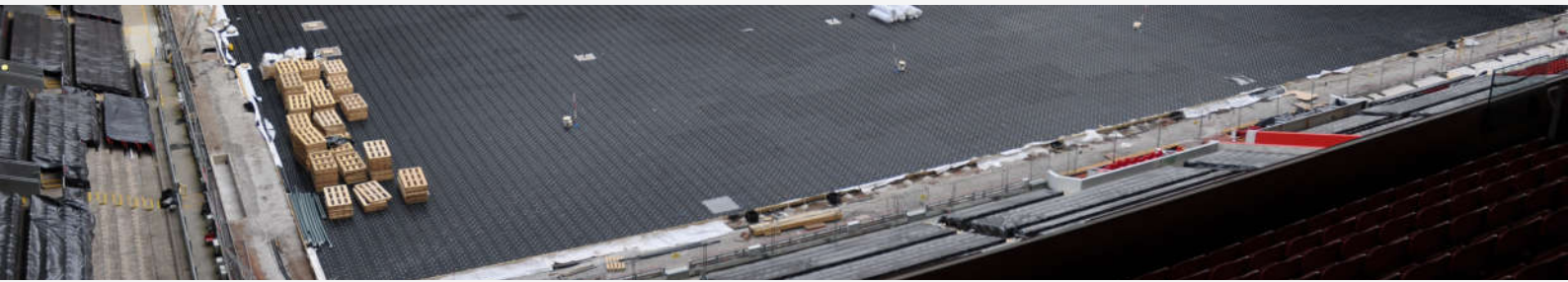
## Wirral Youth Zone, Birkenhead



A synthetic turf rooftop 5-a-side football pitch designed and installed by SELSports, as part of the Onside Youth Zone scheme.







SELSports Division, Canal House, Bonsall Street, Blackburn, BB2 4DD.  
T: 01254 589987 E: [info@selenvironmental.com](mailto:info@selenvironmental.com)