



SELSports Rooftop MUGA Installation



Sel Environmental
Real Innovation.



Contents

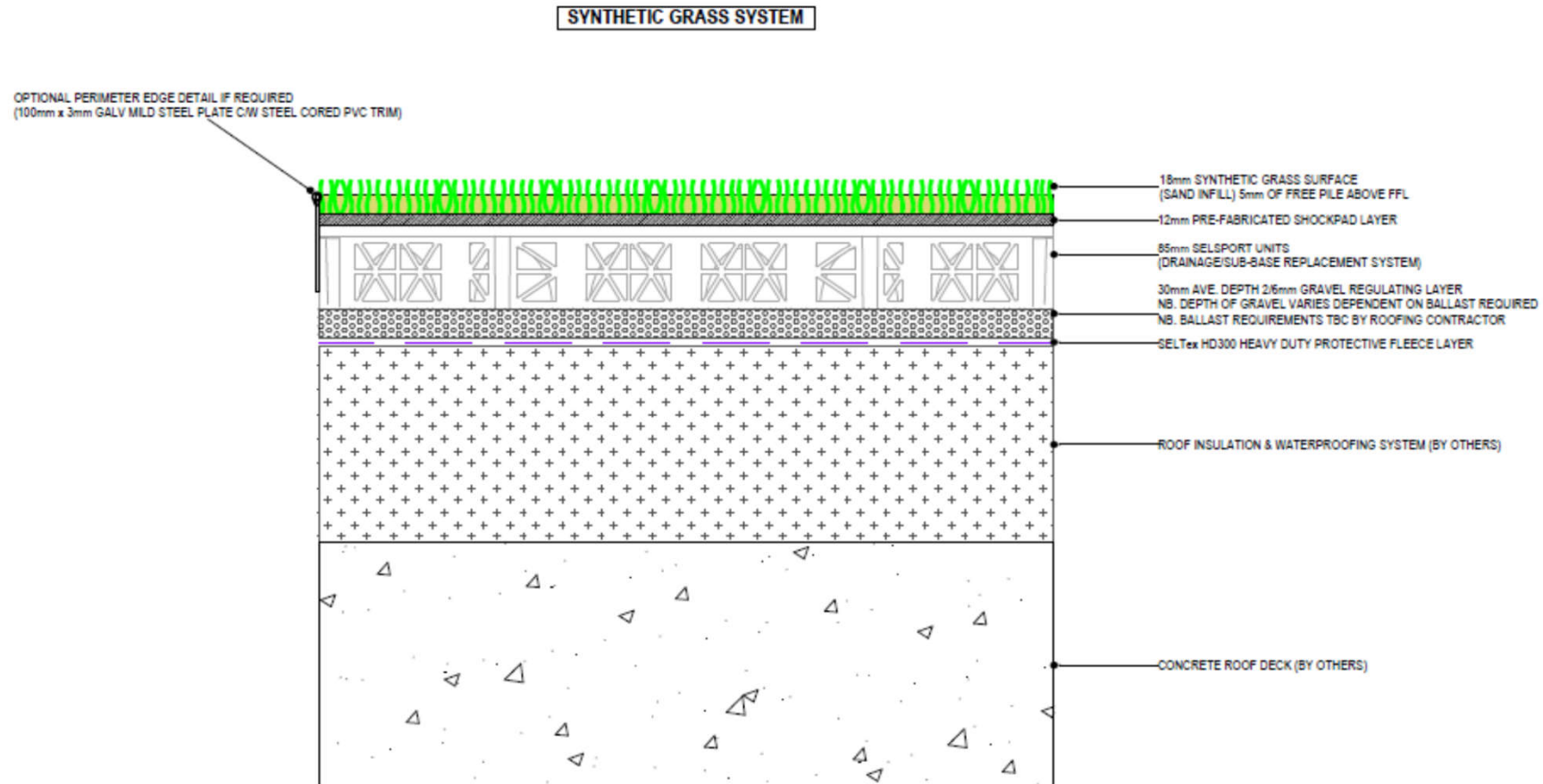
- System Overview
- Synthetic Grass System
- Offsite Prep & Pre-Fab
- Pre-start
- Fence Post Installation
- Waterproofing / insulation
- Protective Fleece
- Gravel Regulating Layer
- Drainage/Sub-Base Replacement layer
- Shockpad
- Synthetic Grass Surfacing
- Jointing & Play lines
- Infill
- Fence Panel & Roof Net Install



System Overview

- Innovative & alternate method of sports facility construction
- Design & working method optimised for rooftop locations
- Light Weight
- Modular
- Fully Permeable
- Installed directly onto underlying roof construction
- Several compatible surface finishes

Synthetic Grass System





Off Site Preparation & Pre -Fabrication



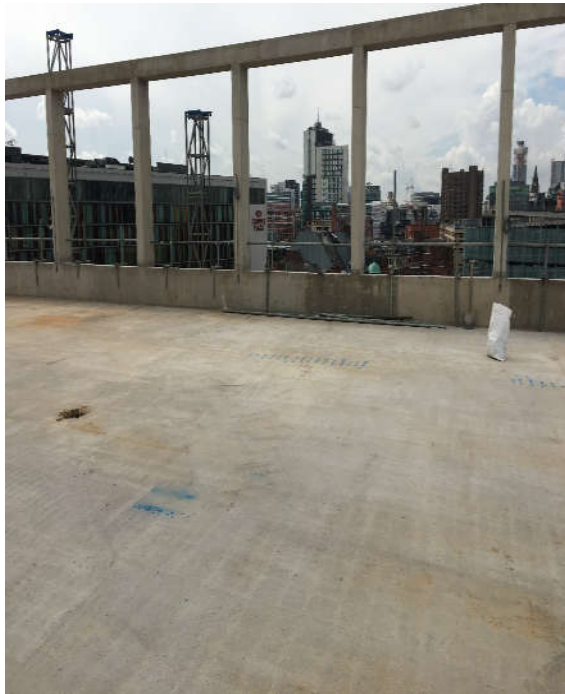
Where possible materials pre-fabricated off site and delivered to site palletised.

Improves efficiency of lifting operation onto roof.

Reduces install time on-site.



Pre-Start



Installation location to be free of others trades & materials.

Area inspected and accepted by SEL.

Distribution of materials plan put into action.



Fence Post Installation



Fence posts set out, marked, and drilled.

Thermal Breaks positioned beneath base plates (if required).

Secured with mechanical anchors in line with fencing design and bolt technical data.

Pitch Pockets (or similar) formed by others prior to waterproofing.

Waterproofing & Insulation



Waterproofing and insulation to be installed (by others) and appropriately signed off.

Protective Fleece & Gravel Regulating Layer



Protective geotextile is rolled out over the area.

Depth of gravel is set and maintained using laser level.

Gravel Regulating Layer



Gravel is deposited in bays and levelled by hand.

The gravel is checked at regular intervals to ensure surface regularity.

(>10mm) Over 3m Edge

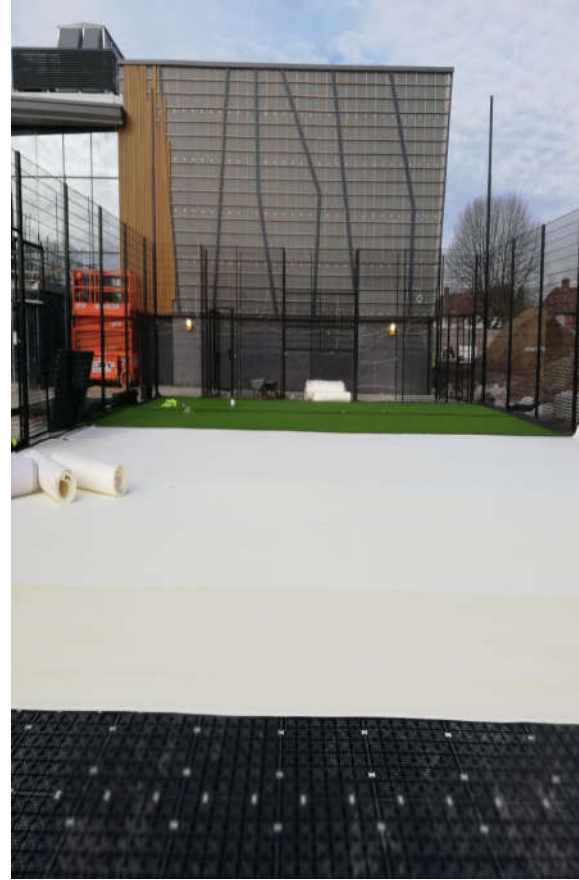
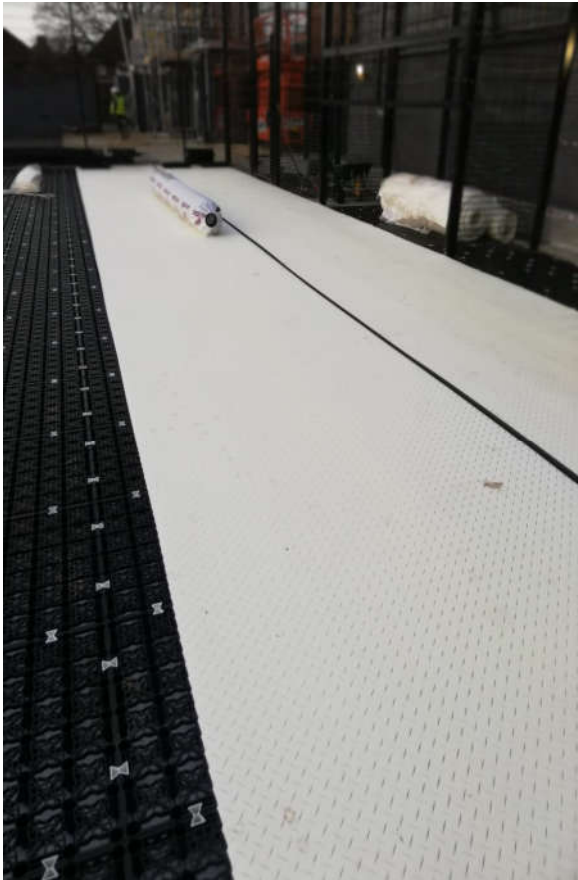
Drainage / Sub-base Replacement Layer



The drainage/sub-base replacement system is then installed by hand.

The units are placed in panels and then secured together using locking pins.

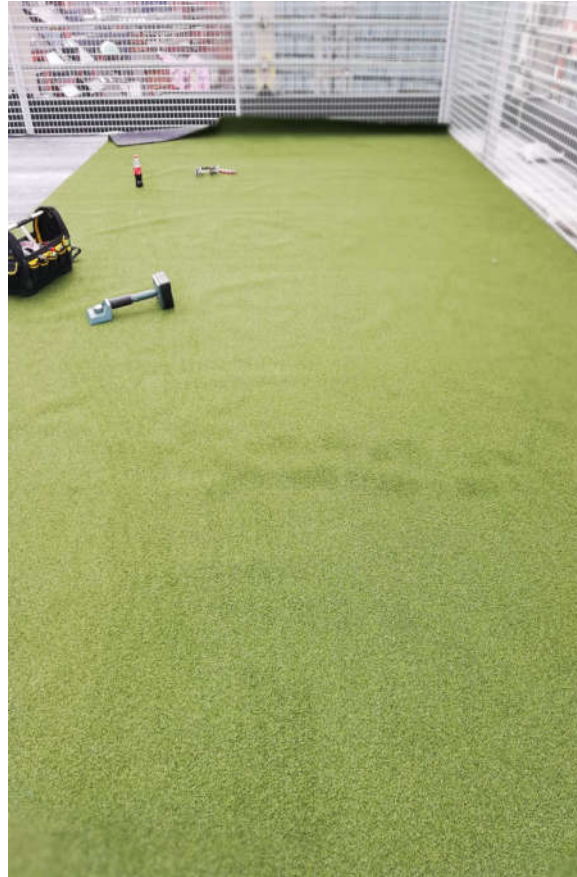
Shockpad



Rolls of pre-fabricated shockpad are rolled out over the area.

All joints are taped.

Synthetic Grass



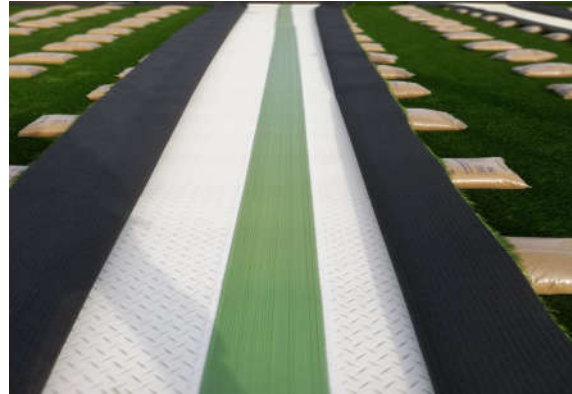
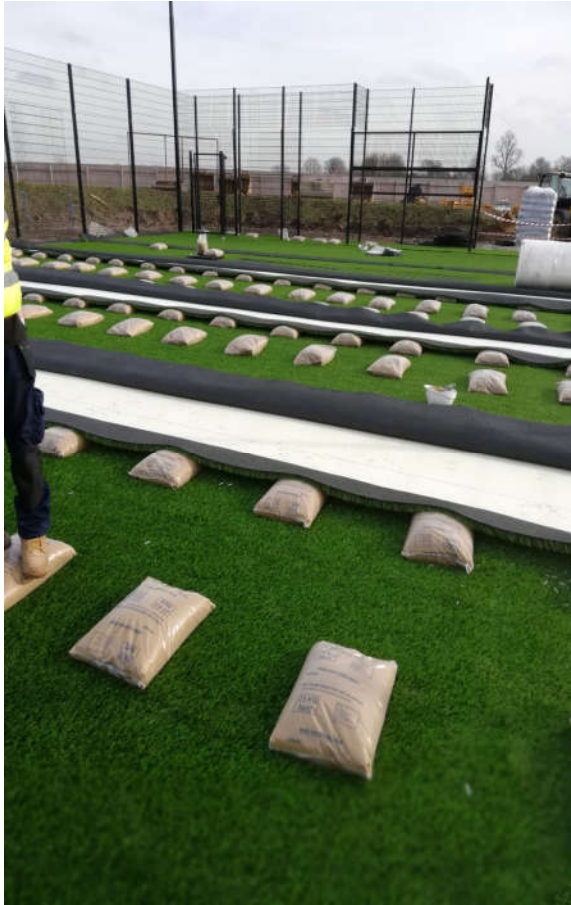
Rolls of synthetic grass are positioned in the correct location in line with the manufacturers roll-plan.

The rolls are then rolled out over the area.

The edges of the rolls are lined up so that they neatly butt up to each other.

Any ripples or creases are removed using a kicker.

Jointing & Play Lines



The edges of the rolls are then peeled back in preparation for jointing.

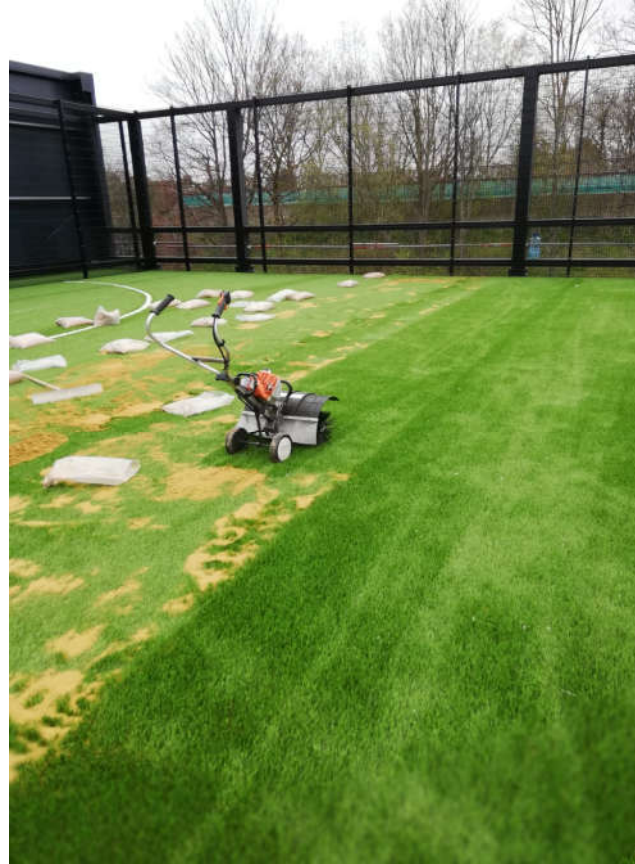
A strip of jointing tape is dispensed and covered with adhesive.

The roll edges are then pressed into the adhesive and left until cured.

Play lines are marked and then cut out using specialist cutting tools.

Coloured line marking material is then inlaid and secured with tape and adhesive.

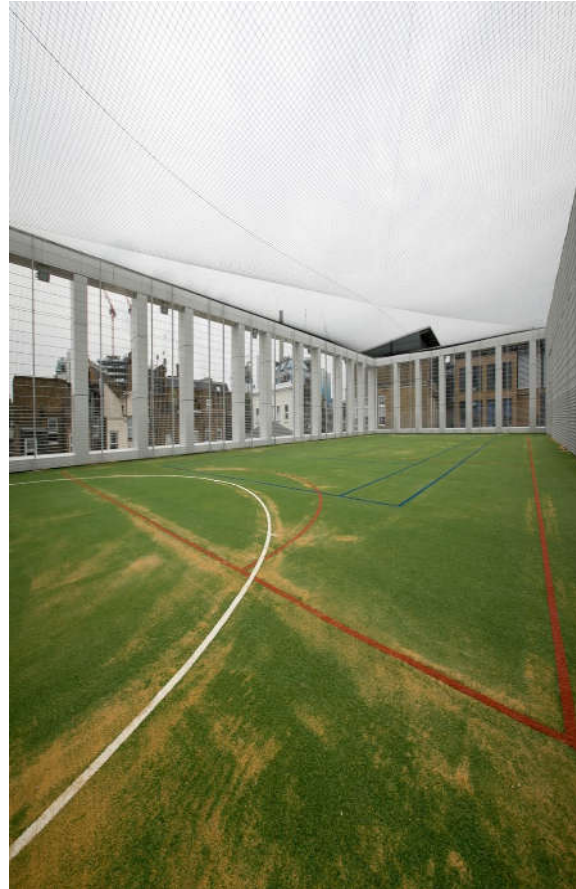
Infill & Brushing



Silica sand infill is distributed over the synthetic grass in accordance with the grass manufacturers recommended spread rate.

The sand is then brushed into the surface using a walk behind power brush.

Fence Panels & Roof Net



Fencing panels are then clad onto the fence posts using anti-tamper fixings and clamp bars.

The roof net is then suspended on tensioned steel line wires braced by the fence posts.





COMPLETION



Thanks for Listening

Any Questions?



Sel Environmental
Real Innovation.